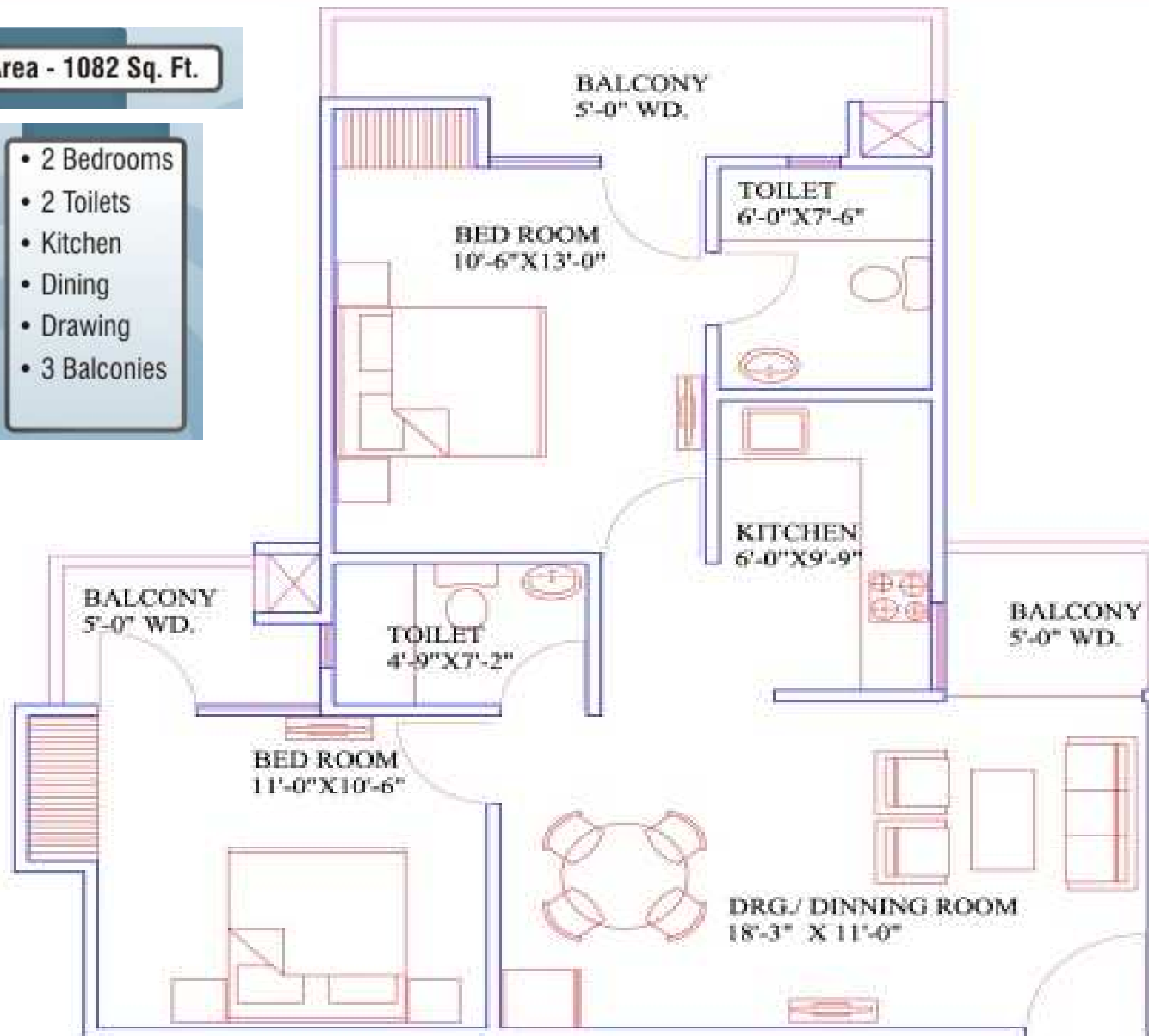


2 BHK

Area - 1082 Sq. Ft.

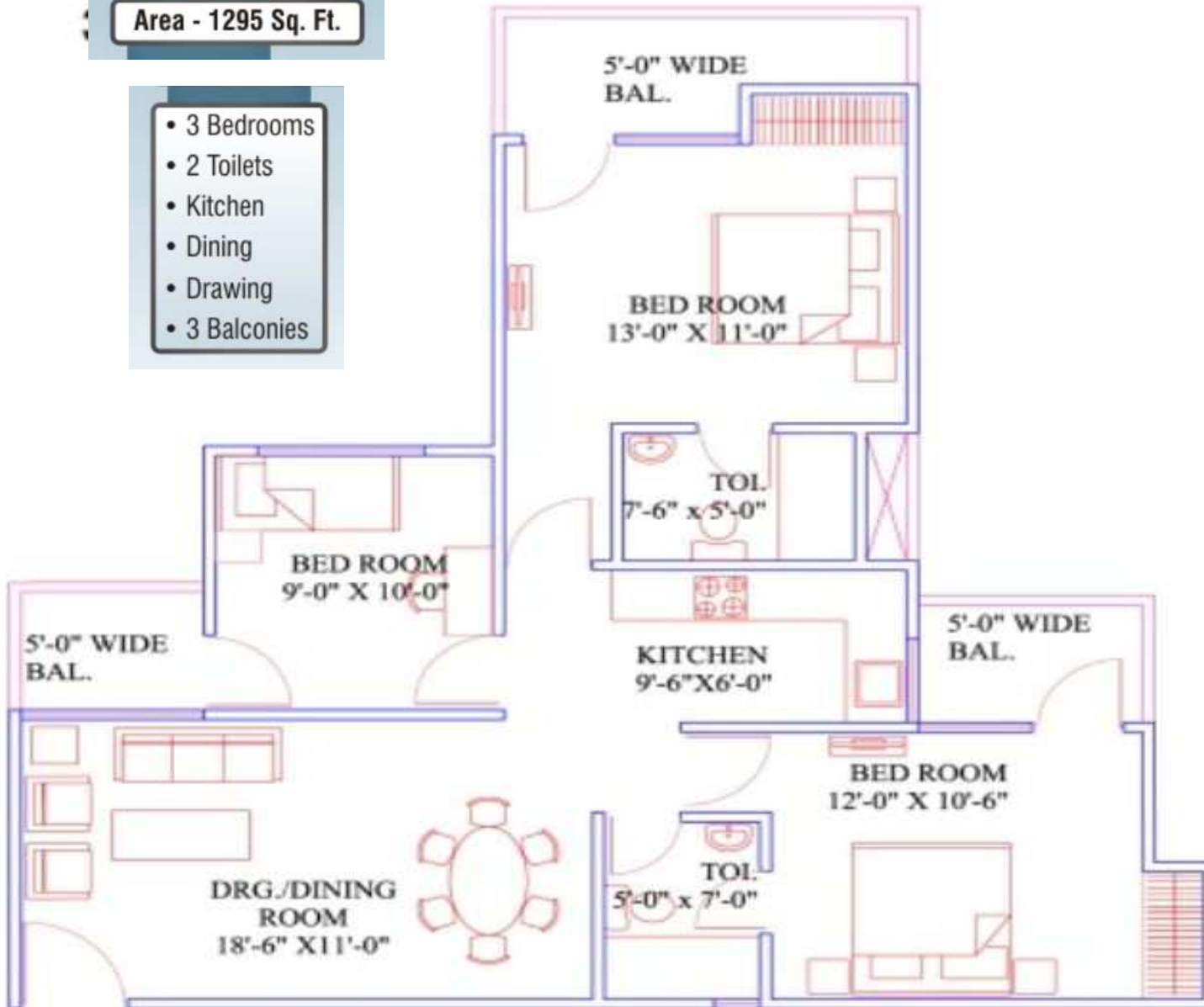
- 2 Bedrooms
- 2 Toilets
- Kitchen
- Dining
- Drawing
- 3 Balconies



3 BHK – TYPE - A

Area - 1295 Sq. Ft.

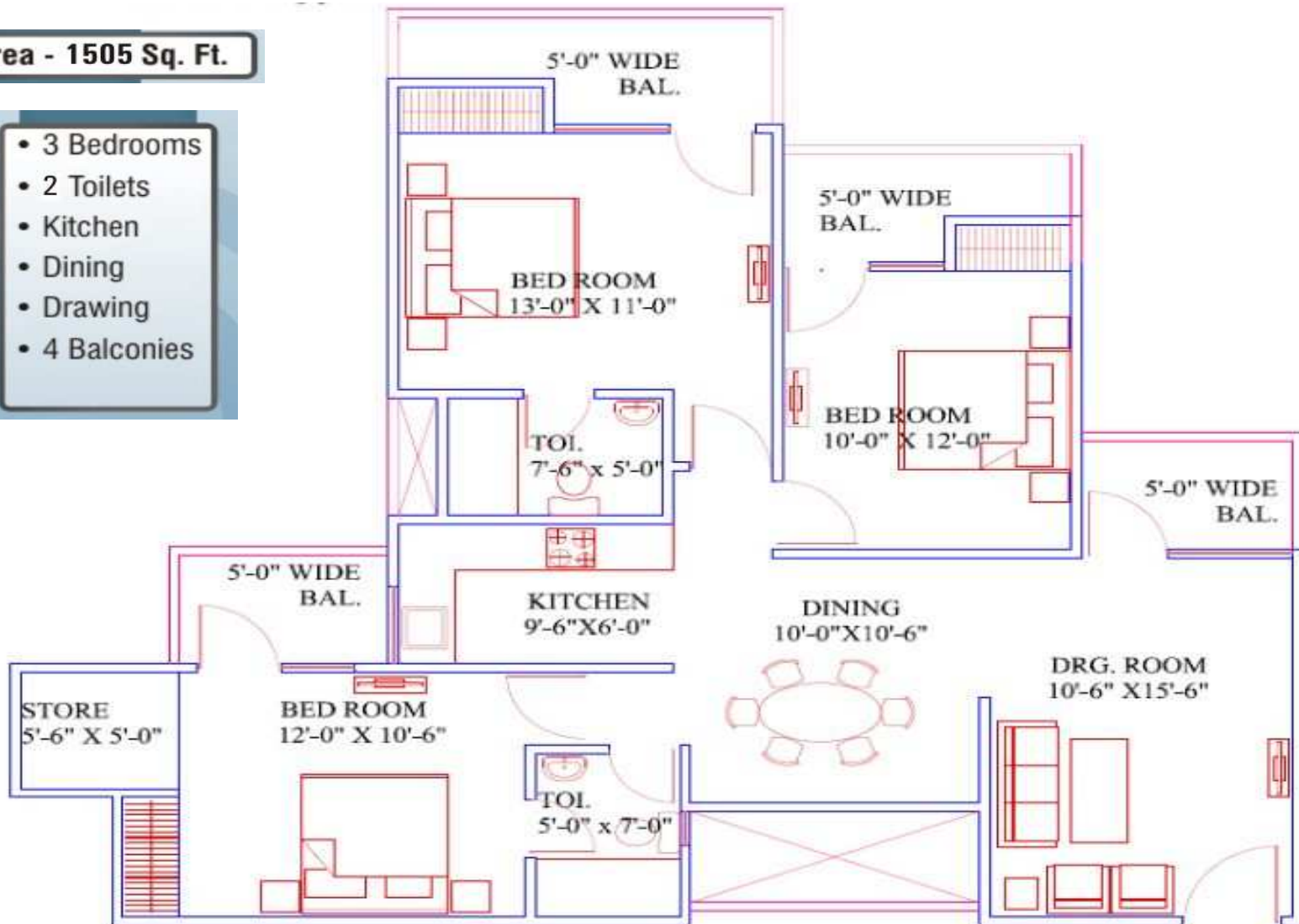
- 3 Bedrooms
- 2 Toilets
- Kitchen
- Dining
- Drawing
- 3 Balconies



3 BHK – TYPE - B

Area - 1505 Sq. Ft.

- 3 Bedrooms
- 2 Toilets
- Kitchen
- Dining
- Drawing
- 4 Balconies



PAYMENT PLANS - CATERS FOR - 3 PAYMENT OPTIONS
OPTION-1 – Construction Linked Payment @ Rs. 3000 per Sq Ft.
OPTION-2 – Down Payment- 12% discount
OPTION -3 – Flexi Plan - 6% discount

OPTION - 1

Construction Linked Plan - (CLP)

| | |
|-----------------------------------|-----|
| At the time of booking | 10% |
| On Bhoomi Poojan | 10% |
| On completion of foundation | 10% |
| On casting of basement slab | 08% |
| On casting of second floor slab | 08% |
| On casting of fifth floor slab | 08% |
| On casting of eighth floor slab | 08% |
| On casting of twelfth floor slab | 08% |
| On casting of fourteen floor slab | 08% |
| On brickwork | 05% |
| On interior plaster | 06% |
| On flooring and tiles | 06% |
| On offer of possession | 05% |

OPTION - 2

Down Payment Plan

| | |
|-----------------------------|-----|
| At the time of booking | 10% |
| Within 30 days from booking | 85% |
| On offer of possession | 05% |

OPTION - 3

Flexi Payment Plan

| | |
|---------------------------------|-----|
| At the time of booking | 10% |
| Within 60 days of booking | 40% |
| On completion of foundation | 09% |
| On casting of basement slab | 09% |
| On casting of second floor slab | 09% |
| On casting of fifth floor slab | 09% |
| On casting of eighth floor slab | 09% |
| On offer of possession | 05% |